

# Data Strategy & Ontology

---

## Federated Project Management Practices & Approach

1

## Dimensions Vs Facts

### Dimensions

---

Dimensions bring in necessary Context by providing descriptive attributes that you can use to filter, group, and label the data in fact tables.

- Includes a surrogate key (Notional key, unique)
- Stable data (Slow pace of Change of data)

### Types of Dimensions

---

#### Conformed Dimensions:

These are shared across multiple fact tables, ensuring consistency in your analysis when different datasets are combined.

#### Role-Playing Dimensions:

These are used in multiple roles within a schema, such as a "Date" dimension being used to track both order dates and shipping dates.

#### Slowly Changing Dimensions:

These track historical changes over time, allowing you to see how attributes like customer information or product details have evolved.

2

# Dimensions Vs Facts

## Facts

Facts are the quantitative data required for analysis that can be aggregated to address key business questions.

- Foreign Key is used to connect with Dimensions
- Fast pace of Change of data (granular data)

## Types of Dimensions

### Transaction Fact Tables:

These record individual events, like sales transactions or website clicks. They are highly granular, capturing every instance of an event.

### Periodic Snapshot Fact Tables:

Instead of recording every transaction, these tables capture the status of a process at regular intervals, such as daily or monthly sales totals.

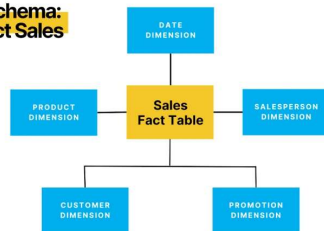
### Accumulating Snapshot Fact Tables:

These tables show the progression of a process over time, like the stages of an order fulfillment process, capturing the evolving state of an event as it moves through different stages.

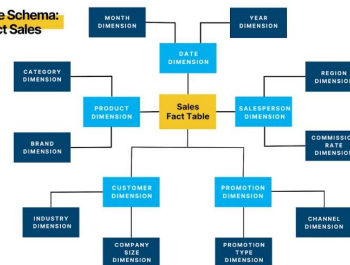
3

# Relationship - Dimensions & Facts

## Star Schema: Product Sales



## Snowflake Schema: Product Sales



4

# Objects

---

1. PROJECT INITIATION / INCEPTION PHASE
2. ENGINEERING & DESIGN PHASE
3. PROCUREMENT PHASE
4. POST ORDER & LOGISTICS TRACKING
5. CONSTRUCTION / EXECUTION PHASE
6. CONTRACTS & COMMERCIALS
7. PROJECT CONTROLS / PMO
8. IT & SYSTEMS
9. TESTING, COMMISSIONING & HANDOVER
10. STAKEHOLDER COMMUNICATION & ESG

5

# Objects

---

1. **PROJECT INITIATION / INCEPTION PHASE**
2. ENGINEERING & DESIGN PHASE
3. PROCUREMENT PHASE
4. POST ORDER & LOGISTICS TRACKING
5. CONSTRUCTION / EXECUTION PHASE
6. CONTRACTS & COMMERCIALS
7. PROJECT CONTROLS / PMO
8. IT & SYSTEMS
9. TESTING, COMMISSIONING & HANDOVER
10. STAKEHOLDER COMMUNICATION & ESG



- *Project Charter*
- *Feasibility Study Report*
- *Business Case / ROI Analysis*
- *Environmental Impact Assessment (EIA)*
- *Land Acquisition Documents*
- *Regulatory & Statutory Approvals*
- *Master Plan / Site Layout Plan*
- *MoUs with Government / Partners*
- *Stakeholder Register*
- *Risk Register (Initial)*
- *Project Governance Structure*
- *Funding Plan / Capital Allocation*

6

# Objects


---

- |   |   |  |
|---|---|--|
| <ol style="list-style-type: none"> <li>1. PROJECT INITIATION / INCEPTION PHASE</li> <li>2. <b>ENGINEERING &amp; DESIGN PHASE</b></li> <li>3. PROCUREMENT PHASE</li> <li>4. POST ORDER &amp; LOGISTICS TRACKING</li> <li>5. CONSTRUCTION / EXECUTION PHASE</li> <li>6. CONTRACTS &amp; COMMERCIALS</li> <li>7. PROJECT CONTROLS / PMO</li> <li>8. IT &amp; SYSTEMS</li> <li>9. TESTING, COMMISSIONING &amp; HANDOVER</li> <li>10. STAKEHOLDER COMMUNICATION &amp; ESG</li> </ol> |  | <ul style="list-style-type: none"> <li>• <i>Basic Engineering Package</i></li> <li>• <i>Detailed Engineering Drawings</i></li> <li>• <i>Design Change Request Register</i></li> <li>• <i>Specification Documents 3D Models (BIM, Tekla, etc.)</i></li> <li>• <i>Bill of Quantities (BoQ)</i></li> <li>• <i>P&amp;ID (Piping &amp; Instrumentation Diagrams)</i></li> <li>• <i>Material Take-off Sheets (MTOs)</i></li> <li>• <i>Design Review Comments Register</i></li> </ul> |
|---|---|--|

7

# Objects

---

- |   |   |   |
|---|---|---|
| <ol style="list-style-type: none"> <li>1. PROJECT INITIATION / INCEPTION PHASE</li> <li>2. ENGINEERING &amp; DESIGN PHASE</li> <li>3. <b>PROCUREMENT PHASE</b></li> <li>4. POST ORDER &amp; LOGISTICS TRACKING</li> <li>5. CONSTRUCTION / EXECUTION PHASE</li> <li>6. CONTRACTS &amp; COMMERCIALS</li> <li>7. PROJECT CONTROLS / PMO</li> <li>8. IT &amp; SYSTEMS</li> <li>9. TESTING, COMMISSIONING &amp; HANDOVER</li> <li>10. STAKEHOLDER COMMUNICATION &amp; ESG</li> </ol> |  | <ul style="list-style-type: none"> <li>• <i>Request for Information (RFI)</i></li> <li>• <i>Request for Quotation (RFQ)</i></li> <li>• <i>Request for Proposal (RFP)</i></li> <li>• <i>Bid Evaluation Matrix</i></li> <li>• <i>Technical Bid Evaluation (TBE)</i></li> <li>• <i>Commercial Bid Evaluation (CBE)</i></li> <li>• <i>Vendor Selection Sheet</i></li> <li>• <i>Letter of Intent (LoI)</i></li> <li>• <i>Purchase Orders (POs)</i></li> <li>• <i>PO Tracker</i></li> <li>• <i>Vendor Master</i></li> <li>• <i>Inspection &amp; Test Plan (ITP)</i></li> <li>• <i>Quality Assurance Plan (QAP)</i></li> </ul> |
|---|---|---|

8

# Objects

---

- |   |   |   |
|---|---|---|
| <ol style="list-style-type: none"> <li>1. PROJECT INITIATION / INCEPTION PHASE</li> <li>2. ENGINEERING &amp; DESIGN PHASE</li> <li>3. PROCUREMENT PHASE</li> <li>4. <b>POST ORDER &amp; LOGISTICS TRACKING</b></li> <li>5. CONSTRUCTION / EXECUTION PHASE</li> <li>6. CONTRACTS &amp; COMMERCIALS</li> <li>7. PROJECT CONTROLS / PMO</li> <li>8. IT &amp; SYSTEMS</li> <li>9. TESTING, COMMISSIONING &amp; HANDOVER</li> <li>10. STAKEHOLDER COMMUNICATION &amp; ESG</li> </ol> |  | <ul style="list-style-type: none"> <li>• <i>Post-Order Tracker</i></li> <li>• <i>Material Dispatch Clearance Certificate (MDCC)</i></li> <li>• <i>Factory Acceptance Test (FAT) Reports</i></li> <li>• <i>Shipping &amp; Logistics Plan</i></li> <li>• <i>Delivery Challans</i></li> <li>• <i>Customs Clearance Documents</i></li> <li>• <i>Site Material Receiving Report</i></li> <li>• <i>Warehouse Inventory Register</i></li> <li>• <i>Material Reconciliation Report</i></li> </ul> |
|---|---|---|

9

# Objects

---

- |   |   |  |
|---|---|--|
| <ol style="list-style-type: none"> <li>1. PROJECT INITIATION / INCEPTION PHASE</li> <li>2. ENGINEERING &amp; DESIGN PHASE</li> <li>3. PROCUREMENT PHASE</li> <li>4. POST ORDER &amp; LOGISTICS TRACKING</li> <li>5. <b>CONSTRUCTION / EXECUTION PHASE</b></li> <li>6. CONTRACTS &amp; COMMERCIALS</li> <li>7. PROJECT CONTROLS / PMO</li> <li>8. IT &amp; SYSTEMS</li> <li>9. TESTING, COMMISSIONING &amp; HANDOVER</li> <li>10. STAKEHOLDER COMMUNICATION &amp; ESG</li> </ol> |  | <ul style="list-style-type: none"> <li>• <i>Daily Progress Report (DPR)</i> <ul style="list-style-type: none"> <li>• <i>Fabrication, Erection, Civil, Piping, Electrical, etc.</i></li> </ul> </li> <li>• <i>Manpower Deployment Log</i></li> <li>• <i>Equipment Utilization Report</i></li> <li>• <i>Material Consumption Log</i></li> <li>• <i>Front Availability Report</i></li> <li>• <i>Work Permits</i></li> <li>• <i>Inspection Reports</i></li> <li>• <i>Contractor Performance Reports</i></li> <li>• <i>S-Curve (Planned vs Actual Progress)</i></li> <li>• <i>Hindrance Register</i></li> <li>• <i>Non-Conformance Report (NCR)</i></li> <li>• <i>Quality Control Checklist</i></li> <li>• <i>Safety Alerts / Incidents Log</i></li> <li>• <i>Toolbox Talk Register</i></li> <li>• <i>Project Look-Ahead Plan (1W, 2W, 4W)</i></li> <li>• <i>Resource Mobilization Tracker</i></li> <li>• <i>Weather Log (for delay justification)</i></li> </ul> |
|---|---|--|

10

# Objects

---

1. PROJECT INITIATION / INCEPTION PHASE
2. ENGINEERING & DESIGN PHASE
3. PROCUREMENT PHASE
4. POST ORDER & LOGISTICS TRACKING
5. CONSTRUCTION / EXECUTION PHASE
6. **CONTRACTS & COMMERCIALS**
7. PROJECT CONTROLS / PMO
8. IT & SYSTEMS
9. TESTING, COMMISSIONING & HANDOVER
10. STAKEHOLDER COMMUNICATION & ESG



- *Contract Agreements*
- *Payment Milestone Tracker*
- *Contractor Billing Status*
- *Change Orders / Variation Register*
- *Claims Register*
- *Advance / Retention Tracker*
- *Tax Compliance Documents*
- *Invoice Processing Logs*

11

# Objects

---

1. PROJECT INITIATION / INCEPTION PHASE
2. ENGINEERING & DESIGN PHASE
3. PROCUREMENT PHASE
4. POST ORDER & LOGISTICS TRACKING
5. CONSTRUCTION / EXECUTION PHASE
6. CONTRACTS & COMMERCIALS
7. **PROJECT CONTROLS / PMO**
8. IT & SYSTEMS
9. TESTING, COMMISSIONING & HANDOVER
10. STAKEHOLDER COMMUNICATION & ESG



- *Integrated Master Schedule (IMS)*
- *Work Breakdown Structure (WBS)*
- *Earned Value Management (EVM) Reports*
- *Forecast vs Actual Cost Reports*
- *Schedule Risk Analysis*
- *Project KPIs Dashboard*
- *Cost Performance Index (CPI)*
- *Schedule Performance Index (SPI)*
- *Progress Certification Reports*

12

# Objects

---

1. PROJECT INITIATION / INCEPTION PHASE
2. ENGINEERING & DESIGN PHASE
3. PROCUREMENT PHASE
4. POST ORDER & LOGISTICS TRACKING
5. CONSTRUCTION / EXECUTION PHASE
6. CONTRACTS & COMMERCIALS
7. PROJECT CONTROLS / PMO
8. **IT & SYSTEMS**
9. TESTING, COMMISSIONING & HANDOVER
10. STAKEHOLDER COMMUNICATION & ESG



- *Project Document Management System (DMS)*
- *Engineering Document Tracker*
- *BIM Models and Integration Logs*
- *Digital Twin Metadata*
- *IoT Sensor Data Feeds (for real-time progress)*

13

# Objects

---

1. PROJECT INITIATION / INCEPTION PHASE
2. ENGINEERING & DESIGN PHASE
3. PROCUREMENT PHASE
4. POST ORDER & LOGISTICS TRACKING
5. CONSTRUCTION / EXECUTION PHASE
6. CONTRACTS & COMMERCIALS
7. PROJECT CONTROLS / PMO
8. IT & SYSTEMS
9. **TESTING, COMMISSIONING & HANDOVER**
10. STAKEHOLDER COMMUNICATION & ESG




- *Mechanical Completion Certificates*
- *Pre-Commissioning Checklists*
- *Commissioning Plan*
- *Punch Point Register*
- *Operational Readiness Report*
- *Training & Handover Documentation*
- *As-Built Drawings*
- *Asset Register*
- *O&M Manuals*

14

# Objects

---

- |   |   |  |
|---|---|--|
| <ol style="list-style-type: none"> <li>1. PROJECT INITIATION / INCEPTION PHASE</li> <li>2. ENGINEERING &amp; DESIGN PHASE</li> <li>3. PROCUREMENT PHASE</li> <li>4. POST ORDER &amp; LOGISTICS TRACKING</li> <li>5. CONSTRUCTION / EXECUTION PHASE</li> <li>6. CONTRACTS &amp; COMMERCIALS</li> <li>7. PROJECT CONTROLS / PMO</li> <li>8. IT &amp; SYSTEMS</li> <li>9. TESTING, COMMISSIONING &amp; HANDOVER</li> <li>10. <b>STAKEHOLDER COMMUNICATION &amp; ESG</b></li> </ol> |  | <ul style="list-style-type: none"> <li>• <i>Project Status Reports</i></li> <li>• <i>Site Visit Reports</i></li> <li>• <i>Board Review Presentations</i></li> <li>• <i>CSR Activities Log</i></li> <li>• <i>Sustainability Metrics (Energy, Emissions, Waste)</i></li> <li>• <i>Community Engagement Records</i></li> <li>• <i>Labour Welfare Initiatives</i></li> </ul> |
|---|---|--|

15

# Ontology Design for a steel plant

---

Here's a comprehensive **Ontology Design with Data Lineage** tailored for a **Steel Plant Project** in **Palantir Foundry**, covering both physical and digital assets. It integrates construction, operations, procurement, and monitoring phases — with a focus on how datasets connect across the project lifecycle.

## Ontology Design for Steel Plant Project

---

- Project Management
- Construction Execution
- Procurement & Logistics
- Operations & Maintenance
- Safety & Compliance
- Digital Twin Monitoring

16

# Entities & Relationships

## A. Project Execution Domain

Entity	Description	Key Attributes
Project	Main capital project	Project ID, Name, Start/End Date, Phase
WorkPackage	Breakdown of tasks	WP ID, Discipline, Status, Planned vs Actual Dates
DailyProgress	Daily progress tracking	Zone, Date, Scope (Tonnage, Meterage), Resource Count
DelayReason	Hindrances or delays	Delay ID, Reason Type, Description, Impact Area

### Relationships:

- Project → has many → WorkPackage
- WorkPackage → has many → DailyProgress
- DailyProgress → may have → DelayReason

17

# Entities & Relationships

## B. Procurement & Material Tracking

Entity	Description	Key Attributes
MaterialMaster	Inventory of all items	Material Code, Description, Type (Structure/Piping), Unit
PO (Purchase Order)	Order raised	PO Number, Vendor, PO Date, Items, Delivery Date
MaterialReceipt	Goods inward	GRN No, PO No, Material Code, Received Date
Inventory	Stock levels	Material Code, Location, Quantity, UOM

### Relationships:

- PO → requests → MaterialMaster
- MaterialReceipt → fulfills → PO
- Inventory → is updated by → MaterialReceipt

18

# Entities & Relationships

## C. Construction Monitoring (Digital Twin)

Entity	Description	Key Attributes
StructureComponent	Beam, Column, Pipe	Component ID, Type, Zone, Drawing No
FabricationProgress	Progress tracking	Date, Component ID, Fabricated %
ErectionProgress	Site-level status	Date, Component ID, Erected %, Installed Date
InspectionLog	QA/QC report	Component ID, Inspector, Status, Remarks

### Relationships:

- StructureComponent → is tracked in → FabricationProgress
- StructureComponent → is tracked in → ErectionProgress
- StructureComponent → has → InspectionLog

19

# Entities & Relationships

## D. Manpower & Equipment

Entity	Description	Key Attributes
ManpowerLog	Daily headcount	Date, Skill, Zone, Count
EquipmentUsage	Machine logs	Date, Equipment ID, Zone, Operating Hours

### Relationships:

- WorkPackage → uses → ManpowerLog
- WorkPackage → uses → EquipmentUsage

20

## Entities & Relationships

### 🚧 E. Safety & Alerts

Entity	Description	Key Attributes
SafetyIncident	Recorded incidents	Incident ID, Zone, Date, Severity
SafetyAlert	Alert or notification	Alert ID, Trigger Rule, Description
IssueRegister	Raised construction issues	Issue ID, Type, Assigned To, Status

#### Relationships:

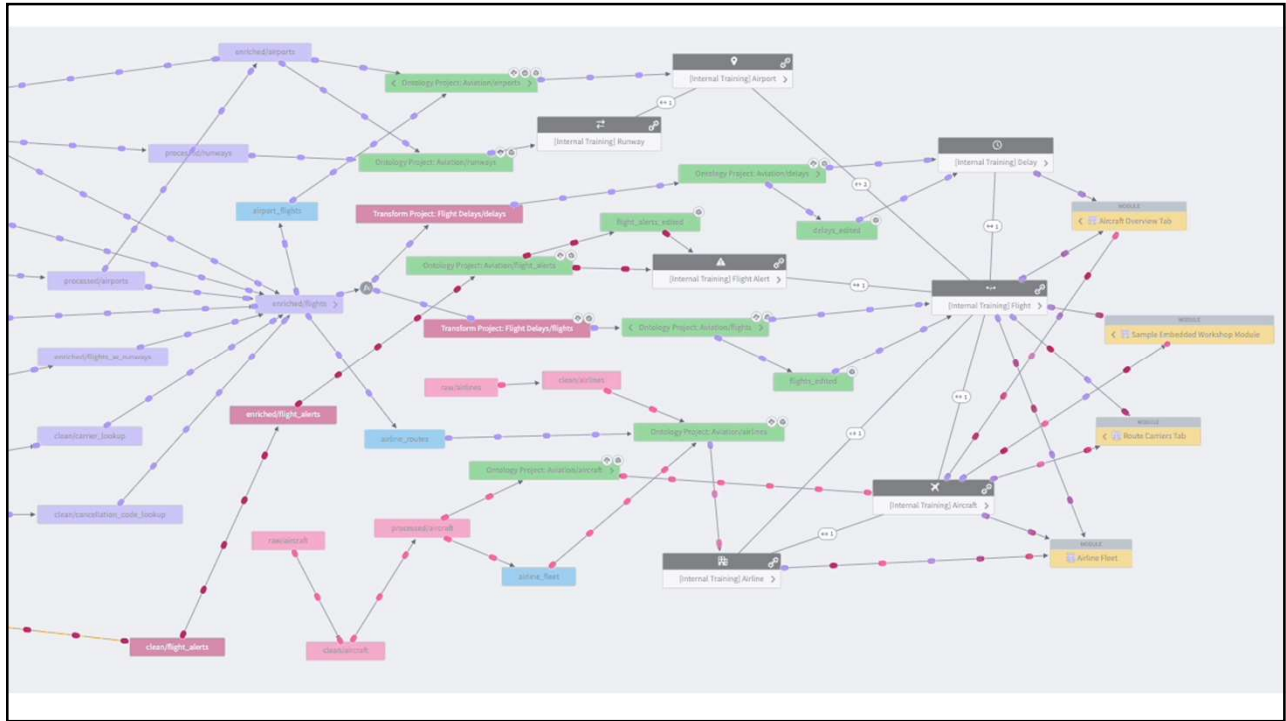
- DailyProgress → triggers → SafetyAlert
- WorkPackage → has → IssueRegister

21

## Data Lineage Example

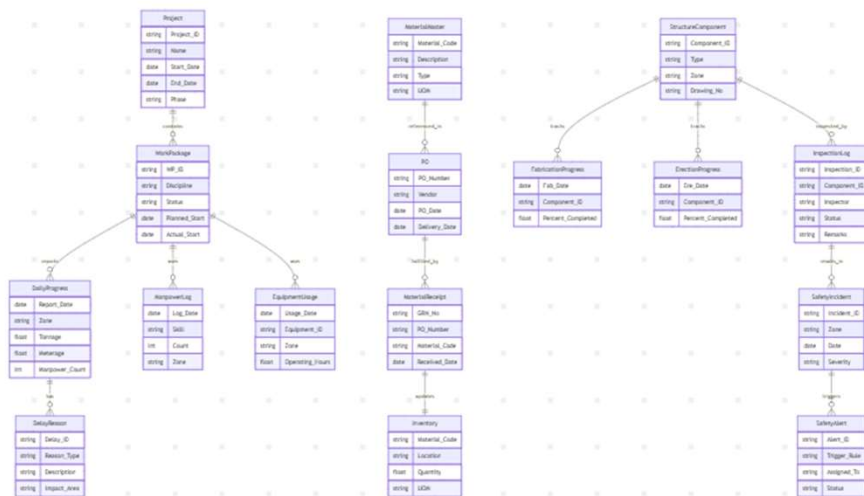
- **DailyProgress.xlsx** (uploaded from field)
  - Bronze (daily\_progress\_raw)
  - Silver (daily\_progress\_curated) - cleaned & standardized
  - Gold Ontology (DailyProgress entity)
  - **Used in:** Delay Analysis, S-Curve, Manpower Productivity apps
- **Material Receipts from ERP**
  - Bronze (material\_receipt\_raw)
  - Silver (material\_receipt\_curated)
  - Ontology → MaterialReceipt entity
  - **Linked to:** PO Tracker, Inventory Levels, Alerts on Shortages

22



23

## Data Lineage ER Diagram – Mermaid.js



24

# Applications

1. **Progress Dashboard** (Erection % by Zone)
2. **Delay Insights** (by Reason Type)
3. **Material Control Tower** (PO vs GRN vs Consumption)
4. **Safety Monitor** (Incident Heatmap)
5. **Productivity KPIs** (Tonnage/manpower/hr)
6. **AI Assistant Tab** (Recommendations, Alert feed)

25

# Gen ai vs Agentic ai

## GenAI

---

Focus: Creating new content, ideas, and solutions.

Output: Text, images, video, audio, code, etc.

Mechanism: Mimics patterns in data to generate new outputs.

Example: Using AI to generate marketing copy or create images.

## Agentic AI

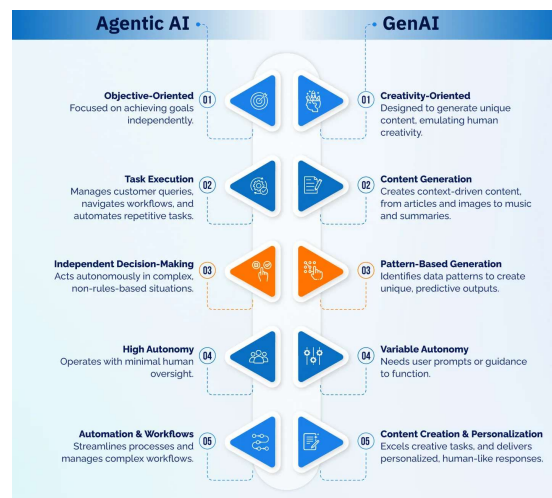
---

Focus: Autonomous decision-making and action execution.

Output: Actions, decisions, and achieving specific goals.

Mechanism: Uses reasoning and learning to make independent decisions.

Example: An AI agent that manages a shopping list and coordinates delivery.



26

# References

- <https://www.montecarlodata.com/blog-fact-vs-dimension-tables-in-data-warehousing-explained/>
- [https://www.google.com/search?sa\\_esv=39c32060fd80a949&rlz=1C1VDKB\\_enIN966IN966&sxsr=AHTn8zq0IDBHKQovFrHeSotowb-yK5d3qw:1747533865358&q=gen+ai+vs+agentic+ai&source=lnms&fbs=ABzOT\\_CWdhQLP1FcmU5B0fn3xuWpA-dk4wpBWOGoR7DG5zjBJljqC1CYKD9D-DQAQ53244LB6yXN\\_55873zya9D7rdspl4eIZ-vqI359pg2WwwB3LRDwatyHNdJ5PPNIR30QLZe9nDGMAlYmmcEdvoSQNV2sBUlvr6fodzNrvclYwigmagb8Z7MEPBtkHRSeAtCCUWolgVGRpQt9f55pL2zvC1CIL5jki7MfWolRdoL86os&sa=X&ved=2ahUKEwiYkz69quNAxUwe2wGHYrHE6EQpQJegQICBAb&biw=1536&bih=730&dpr=1.25](https://www.google.com/search?sa_esv=39c32060fd80a949&rlz=1C1VDKB_enIN966IN966&sxsr=AHTn8zq0IDBHKQovFrHeSotowb-yK5d3qw:1747533865358&q=gen+ai+vs+agentic+ai&source=lnms&fbs=ABzOT_CWdhQLP1FcmU5B0fn3xuWpA-dk4wpBWOGoR7DG5zjBJljqC1CYKD9D-DQAQ53244LB6yXN_55873zya9D7rdspl4eIZ-vqI359pg2WwwB3LRDwatyHNdJ5PPNIR30QLZe9nDGMAlYmmcEdvoSQNV2sBUlvr6fodzNrvclYwigmagb8Z7MEPBtkHRSeAtCCUWolgVGRpQt9f55pL2zvC1CIL5jki7MfWolRdoL86os&sa=X&ved=2ahUKEwiYkz69quNAxUwe2wGHYrHE6EQpQJegQICBAb&biw=1536&bih=730&dpr=1.25)
- <https://www.searchunify.com/infographic/genai-vs-agentic-ai-a-comparative-analysis/>
- [https://mermaid.live/edit#pako:eNqtVIRPZzAU\\_juVnxlq6XpJ3h8IW6WVdoVt0oQUmeQ0eCR2ZjtsWeG\\_7-TaxDEwpuUp8fmOz-fvXjw98UUAxCUgF4yGksbxflDPRorv4OvBw8ObN2I\\_-Crk3Yb6dz5EgTwwBdeUcVVC27YKvqAsynCLUUS6CAhEVJX-K6x9oCIZlugSnDE39Kn915RnoifID-KEIGpgqeh5z9SIsTA9WdVej-gV1SDZDRaUYUvtcNmXZDdgQTuQ-AxXgmPKQv\\_bbgA0sDwdmptGNRhcOibrL13jclDhX4G536PVTtMcUJgKCKy6Wwqa97CWctGRHUB3Hb2RzKeacD55U0s85ou-5xLz9y-OS665orWUmJXfrQNZEXbJd2BzpbzC0D-Wa6jSiOtgEhENQmfnAKpC4YsDEix2427sVP\\_FGI4WF18ZLnumCxbN7zJKG01KpvQW-GoZzHjL9f5Yg9XqY82mXWJ9R183NjLpnyWRiz3QyAgnSqDcAinKPWBWP0doolo1Hb1FDrNtXecNwW\\_Wc\\_6DFRpraLBNWdK8ESHJcKgEWdmedySLrhvTORMp7vFp93ZessNpUkz28qywB5PylfYVIL\\_PtowTikVxKoeARnOjw5QH1-zaXN5hZ3dP2zqkVcQmDF8zJFqj1q42ITxpauDYp0WJ1PohUqt7IO6Oun4UagAkMXie3NT-f1yuDAYSPswOvvYs0vgHz3wBHghp99Xa1r5YQOweZnay9c5dj-E-hffbC-9CvILZE0pVPYZh7GwUTmM\\_teq\\_1GU499M-aeUcs109hfWyZ9n0Vjs9WcN3dQqYLrdKfeR3WqYkbDe22RKisTeEnVwpxAakn1tyTITzKTDB0LwGzagl-P9RuzdKX-6D3ab3s8moxIV8T5pZmlM5Z05FyZb2EaxNl08hMpOtM5PwOZsqT5iXd75\\_cDFurUMy58Db5tG\\_VCnSrEwvzivxLPCIAlyRELAUjY8ARIUHGNP8kBZdrom8BfyCI6887CJ-xFyTa\\_6ilbgn134Sla08p0vCWuDsakfwq\\_-mqv-gGgrMMZHFpEHc2Gxd7EHdPfhF3Dlcv3WmznA0mQznmX0ckQy4k5Gx8PhaDqejmeOM56FTB-Py08i6vB4NhnNpvP53BIPhPI06jz-AZwiul4](https://mermaid.live/edit#pako:eNqtVIRPZzAU_juVnxlq6XpJ3h8IW6WVdoVt0oQUmeQ0eCR2ZjtsWeG_7-TaxDEwpuUp8fmOz-fvXjw98UUAxCUgF4yGksbxflDPRorv4OvBw8ObN2I_-Crk3Yb6dz5EgTwwBdeUcVVC27YKvqAsynCLUUS6CAhEVJX-K6x9oCIZlugSnDE39Kn915RnoifID-KEIGpgqeh5z9SIsTA9WdVej-gV1SDZDRaUYUvtcNmXZDdgQTuQ-AxXgmPKQv_bbgA0sDwdmptGNRhcOibrL13jclDhX4G536PVTtMcUJgKCKy6Wwqa97CWctGRHUB3Hb2RzKeacD55U0s85ou-5xLz9y-OS665orWUmJXfrQNZEXbJd2BzpbzC0D-Wa6jSiOtgEhENQmfnAKpC4YsDEix2427sVP_FGI4WF18ZLnumCxbN7zJKG01KpvQW-GoZzHjL9f5Yg9XqY82mXWJ9R183NjLpnyWRiz3QyAgnSqDcAinKPWBWP0doolo1Hb1FDrNtXecNwW_Wc_6DFRpraLBNWdK8ESHJcKgEWdmedySLrhvTORMp7vFp93ZessNpUkz28qywB5PylfYVIL_PtowTikVxKoeARnOjw5QH1-zaXN5hZ3dP2zqkVcQmDF8zJFqj1q42ITxpauDYp0WJ1PohUqt7IO6Oun4UagAkMXie3NT-f1yuDAYSPswOvvYs0vgHz3wBHghp99Xa1r5YQOweZnay9c5dj-E-hffbC-9CvILZE0pVPYZh7GwUTmM_teq_1GU499M-aeUcs109hfWyZ9n0Vjs9WcN3dQqYLrdKfeR3WqYkbDe22RKisTeEnVwpxAakn1tyTITzKTDB0LwGzagl-P9RuzdKX-6D3ab3s8moxIV8T5pZmlM5Z05FyZb2EaxNl08hMpOtM5PwOZsqT5iXd75_cDFurUMy58Db5tG_VCnSrEwvzivxLPCIAlyRELAUjY8ARIUHGNP8kBZdrom8BfyCI6887CJ-xFyTa_6ilbgn134Sla08p0vCWuDsakfwq_-mqv-gGgrMMZHFpEHc2Gxd7EHdPfhF3Dlcv3WmznA0mQznmX0ckQy4k5Gx8PhaDqejmeOM56FTB-Py08i6vB4NhnNpvP53BIPhPI06jz-AZwiul4)